



Community Wellbeing Dashboard

Project summary and indicators



RURAL ONTARIO
INSTITUTE

Vision, Voice and Leadership

About ROI

The **Rural Ontario Institute (ROI)** is a charitable organization.

Our mission is to build **vision, voice** and **leadership**.

ROI supports **thriving & vibrant** rural communities by

- ❖ Developing leaders
- ❖ Connecting communities
- ❖ Informing decision makers

Data-driven tools for rural decision making

- Rural Housing Information System
- Rural Community Wellbeing Dashboard



Overview



OBJECTIVES

- Improve access to information and evidence for rural decision making
- Empower people to tell a holistic story about all aspects of community wellbeing
- Adopt a standardized approach that can be applied across Canada (CSA Standard)

OUTCOMES

- Provide data and indicators via an interactive, digital dashboard
- Mobilize knowledge and build capacity to help rural communities use the tool
- Test the performance of the CSA Standard and provide feedback for standard revision

PARTNERS

- Ontario Trillium Foundation
- Ontario Ministries of Agriculture, Food, Agribusiness and Rural Affairs
- York University
- Rural Ontario Municipal Association
- ECO Canada

Dashboard Purpose



Translate data into understanding

- Establish baselines
- Identify issues and priorities for change
- Find communities who may be experiencing similar challenges and opportunities

Transform understanding into action

- Develop data-driven policies, programs and initiatives
- Monitor progress over time
- Share stories and celebrate successes

Examples of potential uses:

- Develop, review, or revise plans and programs, including Community Safety and Wellbeing Plans, service delivery, and climate action plans.
- Develop business cases for funding applications.
- Initial data gathering for reporting or briefing purposes.
- Starting point for focusing investment for further research or data collection.

Project timeline



Deliverables: Pilot dashboard & report

Dashboard launch

Report

Updates

Report

2021

2022

2023

2024

2025

2026

2027

Phase 1

- Research & scoping
- Selected subset of indicators
- Identified data sources
- Engaged communities
- Created pilot dashboard

Phase 2

- Refined dashboard design
- Finalized indicators/data
- Developed and tested dashboard
- Launch dashboard & website
- Engage communities & mobilize knowledge

Phase 3

- Update indicator data
- Review indicators
- Complete CSA standard field test
- Engage communities & mobilize knowledge
- Develop case studies

CSA Standard R113-22



- New standard released in 2022, commissioned by the Standards Council of Canada
- Provides a set of ~120 rural wellbeing indicators grouped into 7 broad categories
- Focus on readily available data, with common definitions and methods
- Over-reliance on traditional socio-economic indicators and data
 - Demographics, Economics, Housing
- Significant data gaps for other indicator categories
 - Health, Society, Environment, Institutions
- Identified additional indicators to address gaps

Data Champions



Volunteer focus group is helping to:

- ensure that the dashboard is relevant, useful, and user-friendly
- validate indicator selection
- identify data sources and proxy indicators
- develop use cases
- raise awareness of this project

Town of Goderich

City of Temiskaming Shores

Tay Valley Township

Front of Yonge Township

Township of Whitewater Region

Municipality of North Grenville

Huron County

Bruce County

Oxford County

Elgin County

Haliburton County

Leeds, Grenville and Lanark District Health Unit

Centre for Workforce Development

Sarnia Lambton Workforce Development Board

Timiskaming Health Unit

Workforce Planning Board of Grand Erie

Ontario Federation of Agriculture

Ontario Ministry of the Solicitor General

Four County Labour Market Planning Board

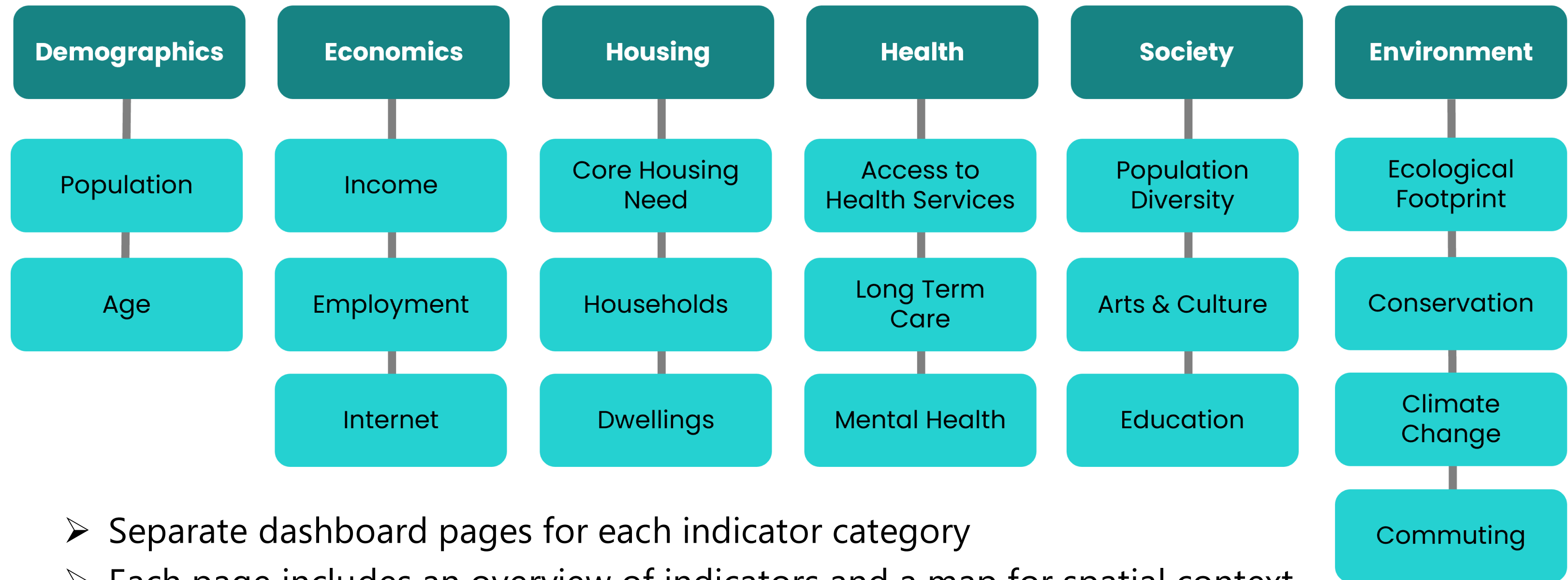
Ontario Ministries of Agriculture, Food, and Agribusiness, and Rural Affairs

Indicator Summary



Category	Number of indicators	Data sources
Demographics	7	2021 Census Profile
Economics	14	2021 Census Profile, Analyst, Ontario Broadband Resource Hub
Housing	13	2021 Census Profile
Health	15	2021 Census Profile, Ontario Long Term Care Association, ConnexOntario, GeoHub - Ontario Ministry of Health
Society	22	2021 Census Profile, Mass Culture Arts Data Platform, Open Database of Arts & Cultural Facilities
Environment	19	2021 Census Profile, Canadian Centre for Climate Services, ROI Ecological Footprint Project, GeoHub
Total	90	Note: only 62 indicators are supported by community level data

Dashboard structure



- Separate dashboard pages for each indicator category
- Each page includes an overview of indicators and a map for spatial context
- Thematic indicator groupings help to tell a story about community wellbeing
- Indicators will be updated and reviewed annually

Demographics



Theme	Indicators	Data source	Indicator status
Age characteristics	Age distribution	2021 Statistics Canada Census Profile	In use
	Median age		
Population	2021 Population		
	Population Change 2016-2021		
	Population density		
	Population change - young adults		
	Population dependency ratio		

Economics



Theme	Indicators	Data source	Indicator status
Employment	Did not work	2021 Statistics Canada Census Profile	In use
	Casual employees		
	Worked from home		
	Local employment		
	Jobs by industry 2018-2022	Analyst	
	Labour force participation	No source for community data	Seeking data source or proxy
	Unemployment rate		
	Employment rate		
Income	Median household income	2021 Statistics Canada Census Profile	In use
	Household income distribution		
	Median individual Income		
	Low-income measure (individual)		
	Source of income	No source for community data	Seeking data source or proxy
Internet	Households with 50/10 broadband service	Ontario Broadband Resource Hub	In use
	Households without internet		

Housing



Theme	Indicators	Data source	Indicator status
Core housing need	Inadequate housing	2021 Statistics Canada Census Profile	In use
	Unaffordable housing		
	Unsuitable housing		
	Core housing need		
Dwellings	Shelter costs		
	Usual residents		
	Dwelling size		
	Dwelling type		
Households	Household type		
	Median income by household type		
	Household size		
	Household tenure		
	One-parent households		

Health



Theme	Indicators	Data source	Indicator status
Access to health services	Number and types of health facilities	Ministry of Health Service Provider Locations	In use
	Access to a health care provider	No source for community data	Seeking data source or proxy
	Emergency department visits		
Health behaviours	Nutrition	No source for community data	
	Physical activity		
Long term care	Proportion of residents aged 85+	Ontario Long Term Care Association	In use
	Number of spaces		
	Wait times for long term care		
	Long term care ratio		
Mental health	Number of calls for mental health services	ConnexOntario	
	Reasons for requesting mental health services		
	Perceived mental health	No source for community data	
Mortality	Premature mortality	No source for community data	
	Common chronic conditions		

Society

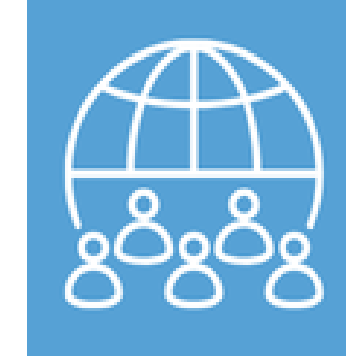


Theme	Indicators	Data source	Indicator status
Arts & Culture	Number and types of charitable arts organizations	Mass Culture Arts Data Platform	In use
	Revenue of charitable arts organizations		
	Number of types of arts & cultural facilities	Open Database of Arts and Culture Facilities	
Education	Highest level of education achieved	2021 Statistics Canada Census Profile	
	High school diploma		
Population Diversity	Knowledge of languages		
	Gender diversity		
	Indigenous identity		
	Immigration		
	Racialized groups		
	Religion & spirituality		
Community safety	Violent crime	No source for community data	Seeking data source or proxy
	Property crime		
	Sexual crime		
	Crimes against children		
	Crimes against women		
	Young offenders		
	Crime severity index		
Civic engagement & governance	Volunteering	No source for community data	Seeking data source or proxy
	Voter turnout		
	Acclaimed positions on council		
	Women in elected council positions		
	Municipal revenues and expenses		

Environment



Theme	Indicators	Data source	Indicator status
Climate change	Hottest day	ClimateData.ca, May 2024	In use
	Coldest day		
	Length of winter season		
	Days with Humidex >35		
	Length of growing season		
	Total precipitation		
Ecological Footprint	Ecological Footprint	Dworatzek et al. 2024	
	Biocapacity		
	Biocapacity balance		
Transportation	Main mode of commuting	2021 Statistics Canada Census Profile	
	Long commute		
	Local commute		
Conservation	Protected areas	Ontario Geohub & Canadian Protected and Conserved Areas Database	In use
Environmental hazards	Forest disturbance by fire and pests	Land Information Ontario	Under development
	Boil water advisories	No source for community data	Seeking data source or proxy
	Air quality warnings		
	Flood warnings		
	Extreme weather events		
	Emergency response to natural disasters		



Questions?

Contact us at
info@ruralontarioinstitute.ca

www.ruralontarioinstitute.ca/wellbeing



Vision, Voice and Leadership